

BLAZE

PowerZone



PRODUCT DESCRIPTION

The PowerZone series of install power amplifiers are designed to provide affordable, versatile, and reliable high-performance audio power.

Our flexible power amplifiers deliver both Lo-Z (4/8 ohm) or Hi-Z (70/100V) loads on any channel. And the total available power is automatically shared across all the channels - thanks to our power sharing technology. This means a system can be easily configured with any power output, and both

Lo-Z and Hi-Z loudspeakers - from just one clever amplifier.

The ultra-compact PowerZone series can be installed in locations where other products cannot - and has desk and wall mount brackets as well as full rack supports.

PowerZone is a small, reliable, and energy-efficient amplifier, that offers quick set-up and custom configuration options.



- Product Description 3
- Key Features 4
- Solutions 5
 - Bars and Cafes
 - Restaurants
 - Retail stores
 - Fitness Centres
 - Hotels and Education Sites
 - Corporate/ Enterprise
 - House of Worship
- Front and Back Panel 6
- Technical Specifications 7
- Dimensions 8
- Accessories 8



PowerZone 252

PowerZone 504

PowerZone 1004

KEY FEATURES

- **All channels deliver high & low impedance loads** – meaning one amplifier can replace two, and saves you costs and installation time.
- **Total power is automatically shared across the output channels** – use one PowerZone amp to utilize the power where you need it (**model-specific feature*).
- **Ultra-compact form factor** – means the ½ rack PowerZones are so small and neat they can be installed in spaces where other brands cannot.
- **Consolidate products and brands** – save the hassle of sourcing multiple amplifiers when PowerZone can be used on many different install sites.
- **Easy to configure DIP Switches** - allow you to set up on-site as you need and has front panel control lock to stop unwanted changes to your setup.
- **GPIO interface** – enables adding of any standard remote control (potentiometer) to the system.
- **Class leading energy efficiency** – means a day-to-day energy saving and long-term low cost of ownership.
- **Pascal's UMAC™ Class-D amplifier technology** – with market proven, ultra-reliable U-PRO amp modules
- PowerZone quality and reliability are backed up with a **5-year warranty**.

SOLUTIONS



Bars and Cafes

The combination of small size and big power flexibility makes PowerZone a great choice for installing in Bars and Cafés. Any system can be easily configured to cover exceptional background sound in locations with single or multiple zones.

Restaurants

Restaurant's use music as part of the dining experience which brings a dynamic sound need. Bar areas demand high sound pressure, and eating areas need much less. PowerZone is ideal and delivers the power required, to any channel, to any zone and to rooms of any size.

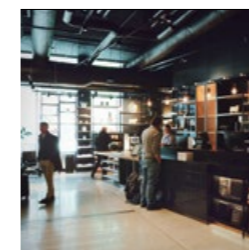
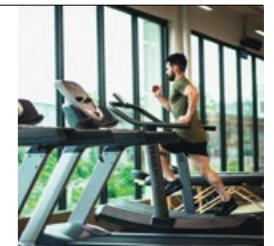


Retail stores

Background music in retail stores must complement the store's profile. This leads to a wide range of system demands. Some stores need cool background sound when others need for more power! PowerZone fit all these needs – and sound zones can be set up easily and power utilised where needed.

Fitness Centres

Fitness locations demand excellent sound with great system flexibility. Background tracks play in gym and workout areas - then heart racing power in the CrossFit classes! PowerZone can cope with these demanding environments as automatic power sharing delivers the required power across any channel and loudspeaker set up.

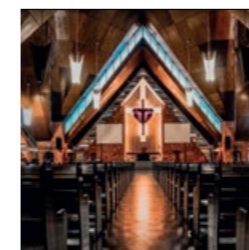
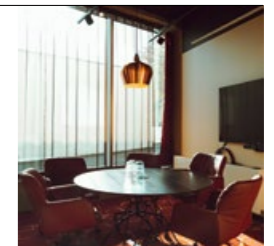


Hotels and Education Sites

For larger installations in hotels and educational facilities with auditoriums, theatres, vast eating spaces, and multiple large meeting rooms, complete power and system flexibility is required. With PowerZone amplifiers you simply match the power and channels you need – then easily configure the system for all the different sound needs.

Corporate/ Enterprise

The corporate space has many different applications – open office spaces, sound for boardrooms and conference rooms, meeting areas of any size – plus warehouses, cafeteria and break areas. PowerZone is an ideal choice as one amplifier can cover all the sound needs.



House of Worship

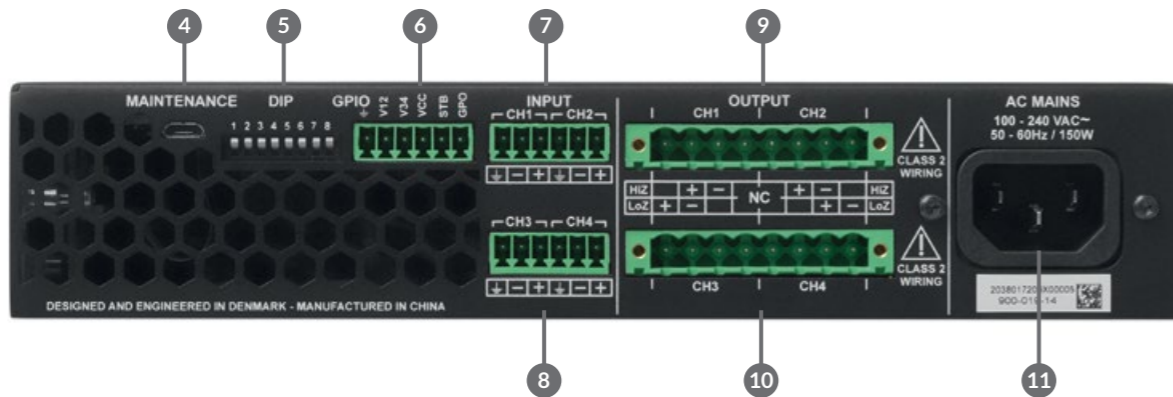
House of Worship sites need very reliable, high-quality amplification of voice, and at the same time the amplifier should cover a large distribution area with many specialized speakers. PowerZone are perfect for house of worship sites – due to the high quality of amplification at low power, delivering superior speech intelligibility.

FRONT AND BACK PANEL



1. Power LED – Standby Indicator
2. Channel LED – Signal Status Indicators
3. Channel Gain Adjust Controls (one control for each channel)
4. Maintenance Port (Only Used by Blaze / Manufacturer)
5. DIP Switches (see user Manual for configuration options)
6. GPIO Connections
7. INPUT – Channel 1&2
8. INPUT – Channel 3&4
9. OUTPUT – Channel 1&2
10. OUTPUT – Channel 3&4
11. Mains Power

*Product shown as example is PowerZone 504



TECHNICAL SPECIFICATIONS

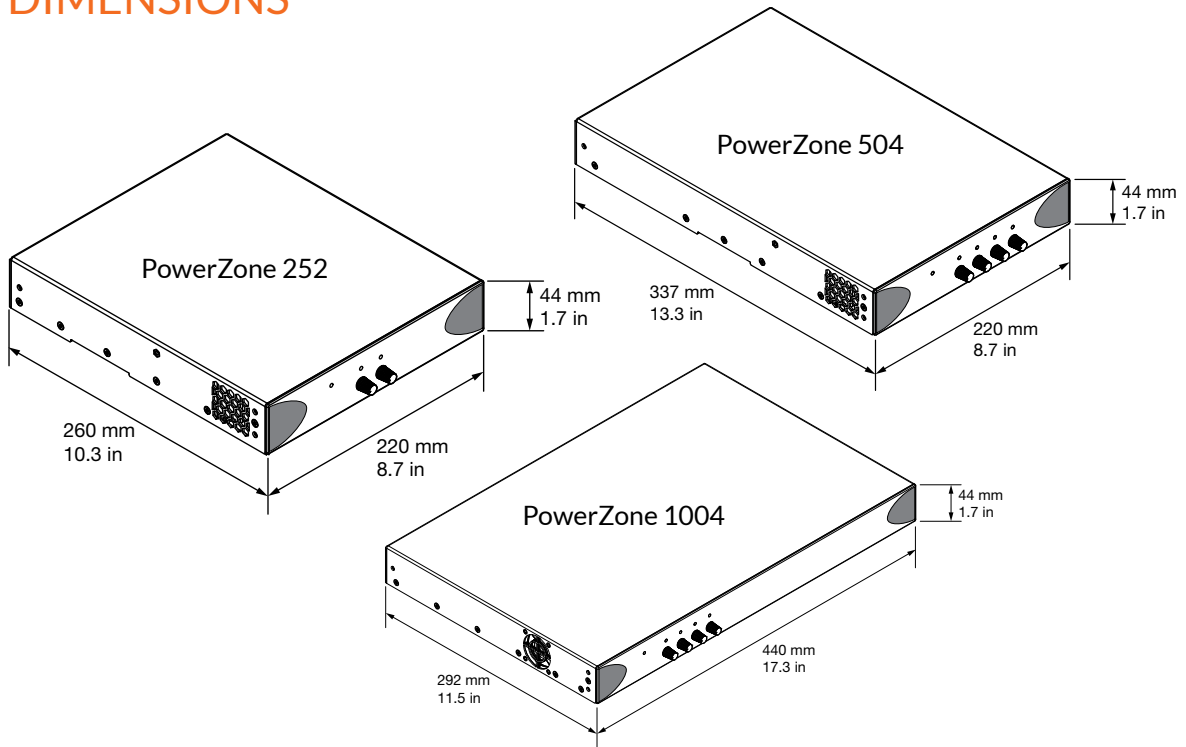
Model	PowerZone 252	PowerZone 504	PowerZone 1004
Total System Power	250 W	500 W	1000 W
Output Power @ 4/8Ω	2 x 125 W	4 x 125 W	4 x 250 W
Output Power @ 70/100V*	2 x 125 W	4 x 125 W	4 x 250 W
Powershare (up to Across all channels**)	1 x 250 W	2 x 250 W	N/A
Power Consumption	75W	150W	300W
Dimensions	44.5 x 220 x 262 mm (1.75 x 8.66 x 10.31 in)	44.5 x 220 x 337 mm (1.75 x 8.66 x 13.27 in)	44.5 x 440 x 292 mm (1.75 x 17.32 x 11.50 in)
Weight	1.9 kg (4.2 lbs)	2.4 kg (5.3 lbs)	3.6 kg (7.9 lbs)
Output Circuitry	UMAC™ Class D - full bandwidth PWM modulator with ultra-low distortion		
Output Voltage	70 Vp / 140 Vpp (unloaded) / Bridged 140 Vp / 280 Vpp (unloaded)		
Signal To Noise-Ratio	> 100 dB (A-weighted, 20 Hz - 20 kHz, 8 Ω load)		
THD+N (typical)	< 0.05 % (20 Hz - 20 kHz, 8 Ω load, 3 dB below rated power)		
Frequency Response	20 Hz - 20 kHz (+0/-0.25 dB (8 Ω load, 3 dB below rated power)		
Protection Circuits	Short circuit protection, DC protection, under voltage protection, temperature protection, overload protection		
Power Supply	UREC™ universal mains switch mode power supply with Power Factor Correction (PFC) and integral standby converter		
Operating Voltage/Frequency.	Universal Mains, 100-240V, 50-60Hz		
Standby Consumption	< 0.5 W (Energy Star & ErP 1275/2008/EC compliant)		
Accessories	2x Rack ears (supplied with PowerZone 1004) 1x 1/2 rack plate extension 2x 1/2 rack mounting 2x Rear supports		
Power Ratings	1% THD @ 120VAC and 230VAC		

*100V line mode is @ -1dB (= 90 V)

**504 may only Powershare across Ch1/2 and Ch3/4

BLAZE

DIMENSIONS



ACCESSORIES

