

# Blaze PowerZone Connect Series URC Driver

---

## Release Notes

---

Current Version: 1.0.1

## Introduction

---

This driver has been designed to provide two-way control of the Blaze PowerZone Connect Series devices via TCP/IP. The following features are supported:

- Source Selection
- Volume Control
- Mute Control
- Mix Level Adjustments Control

This driver has been written and tested using the following Blaze device types:

- PowerZone Connect Series

## Blaze PowerZone Connect Series Configuration

---

It is recommended that the Blaze PowerZone Connect Series system be installed, configured and tested by a suitably qualified engineer, according to Blaze documentation, prior to integration with this driver.

## Driver Installation

---

A single driver file is included in the release package:

Driver File Name	Description
Blaze PowerZone Connect Series_1.0.1.tcm3	This file contains driver files to control all devices.

## Adding to Accelerator

Open your existing TC3 System file in URC Accelerator and then import the Blaze\_PowerZone Connect Series\_v1.0.1.tcm3 file:

- Choose File -> Import TCM File
- In the Total Control Module Library Import window, locate the Blaze\_PowerZone Connect Series\_v1.0.1.tcm3 file and click **Open**.
- From the **Import Total Control Module window that appears**, choose **Import**.

Once the driver has been imported, close URC Accelerator and then reopen it to ensure that the driver has been picked up properly by the driver database.

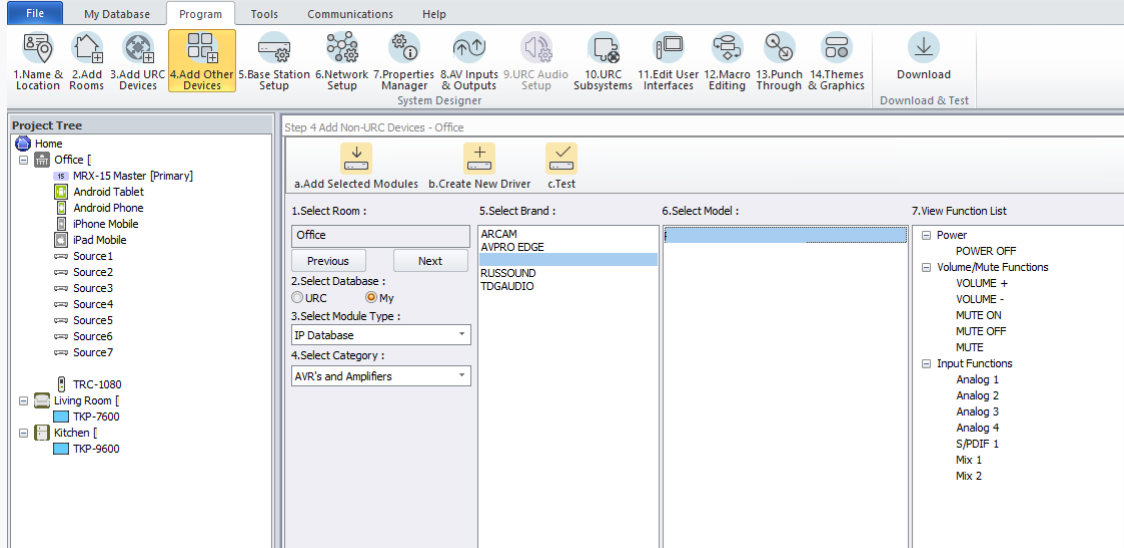
## Adding the Driver

---

These drivers are the same except that they natively support a different number of input and output devices in Accelerator. If you are not making use of the built-in functionality to automatically switch between inputs and outputs then it does not matter which version that you install.

To add the driver:

- Select a room to place the driver
  - It doesn't really matter where this driver goes but it would make sense to locate it in the project where you have it physically in the installation.
- Choose **Program -> 4. Add Other Devices**.
- Ensure **Select Database** is set to **My**.
- Ensure that **Select Module Type** is set to **IP Database**.
- Set Select Category to **AVR's And Amplifiers**.
- Choose **Blaze** from the **Select Brand** list.
- From the **Select Model** choose **Blaze PowerZone Connect Series**.
- Click **Add Selected Modules** to add the device to the room.



Provide IP

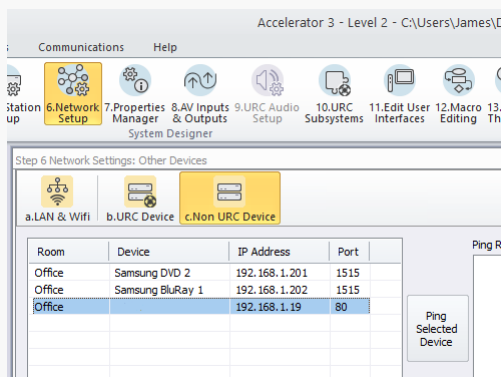
## Configuring the Driver

The driver must be configured to properly support your devices.

### IP Address

The IP Address of the Blaze PowerZone Connect Series must be provided to the Core driver.

- Choose **Program -> 6. Network Setup.**
- Select **Non URC Device** tab.
- For each instance of the driver, provide the correct **IP address** in the table.
  - Note that the port should be set automatically but for reference the correct port is **80**



Provide IP

## User Interface

There is no built in user interface provided for this driver. However, you can configure buttons with attached macros that can be used to control the various functions of the driver:

- Choose **Program -> 10. Edit User Interfaces**
- Select the **Edit Menus by Room** tab
- Add a new sub menu to the main menu by dragging the option from the **3. Add New Items** panel into the **Main Menu** panel for the room where you wish this menu to appear
- You can double click on the name **Empty** to rename to something more appropriate
- In the sub menu section you can then drag the **new macro** option from the **3. Add New Items** panel into the sub-menu panel to add a new button

ProgramToolsCommunicationsHelp

4.Add Other Devices5.Base Station Setup6.Network Setup7.AV Inputs & Outputs8.DMS Setup9.URC Subsystems10.Edit User Interfaces11.3rd Party 2-Way Settings

System Designer

Step 10 Main Menus/Layouts: Edit Menus by Room

Generate Menus & DevicesEdit Menus by RoomEdit Device Layouts

1. Selected Room :

Office

PreviousNext

2. Select View :

Universal Layout

Main Menu Pages

Page 1

Commands

☐ Hide

Previous PageNext Page

Page 2

☐ Hide

All Sub Menus

Commands Menu Pages

Page 1

Preset

☐ Hide

Previous PageNext Page

Page 2

<<Submenus>>

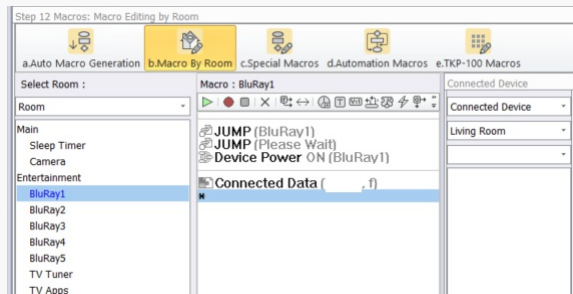
Provide IP

Once you have added all of the buttons you require you can assign macros to them - please see the next section for further details.

## Macros

Ensure that system macros are generated for each instance of the driver by configuring **Program -> 12. Macro Editing** appropriately for your system.

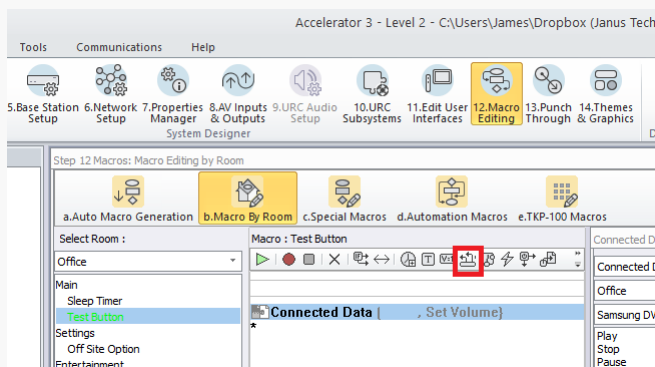
You can view a list of user interface buttons that can be assigned macros by selecting the **Edit Macro By Room** tab and selecting the appropriate room from the drop down menu:



Provide IP

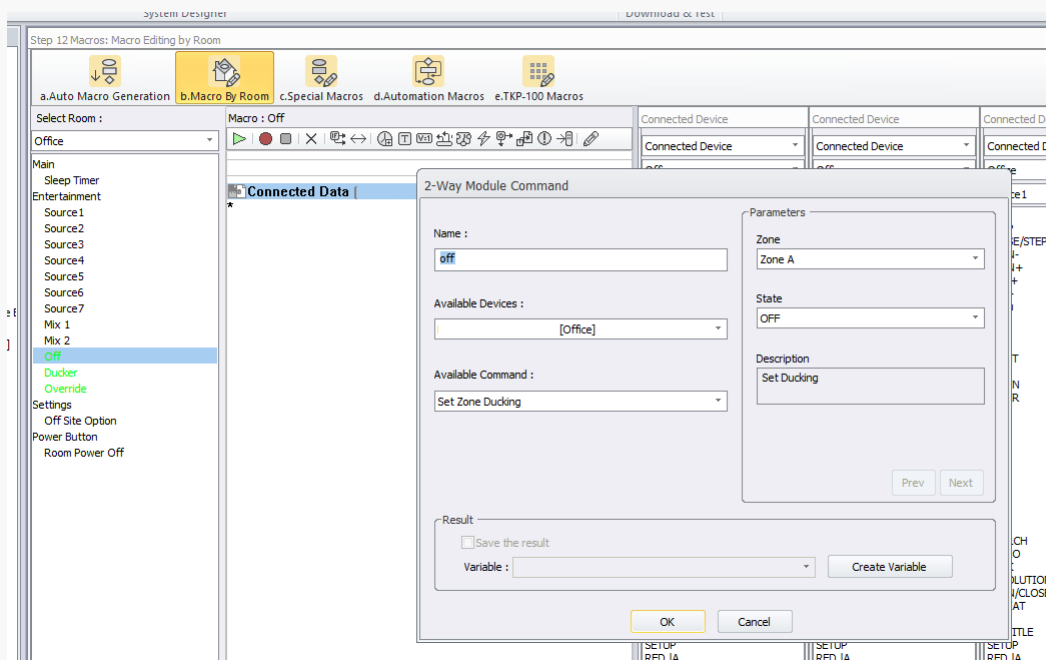
Buttons without actions assigned to them will be shown in **red**.

To add a command to an existing macro select the **query** button from the toolbar under **Program -> 12. Macro Editing**:



Provide IP

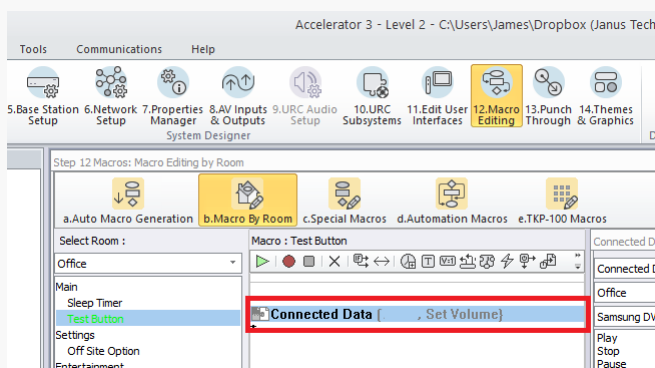
Give the command an appropriate name and then select **Blaze PowerZone Connect Series** from the list of **Available Devices** and the required command from the **Available Command** drop-down menu.



Provide IP

Enter the appropriate parameters (please see the section on commands for more details) and select **OK**.

The command will then be shown in the selected macro:



Provide IP

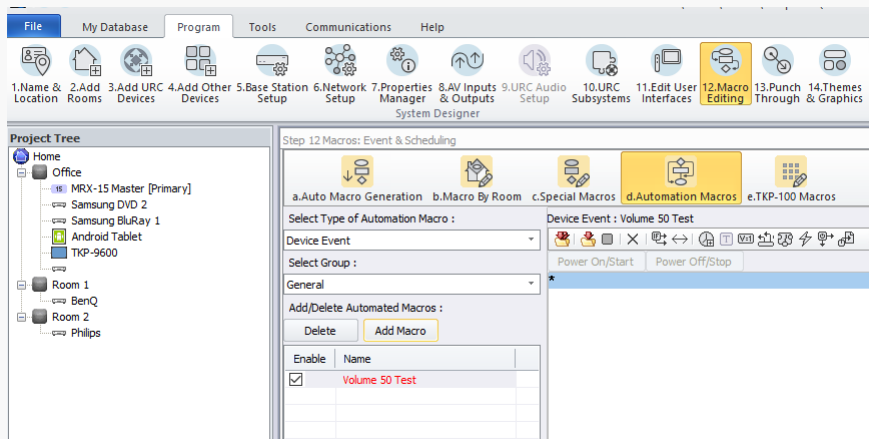
# Events

The following events can be used as a trigger for running a macro on the URC system:

- Volume Level
- Power
- Ducking

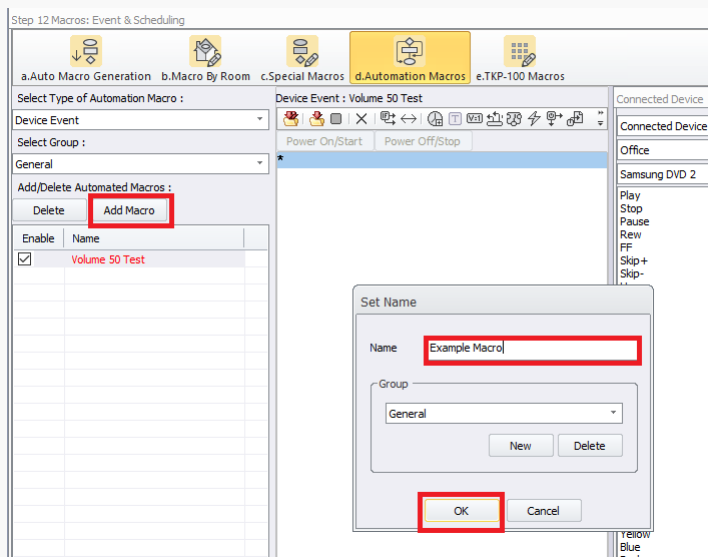
## Adding an Event

To add an **Automation Macro** go to **Program -> 12. Macro Editing** and select the **Edit Automation Macros** tab:



Provide IP

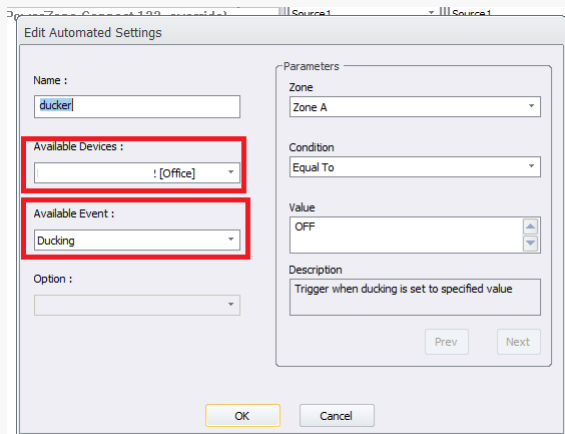
Click on the **Add Macro** button and provide a name and group for your new macro:



Provide IP

Then configure the macro event:

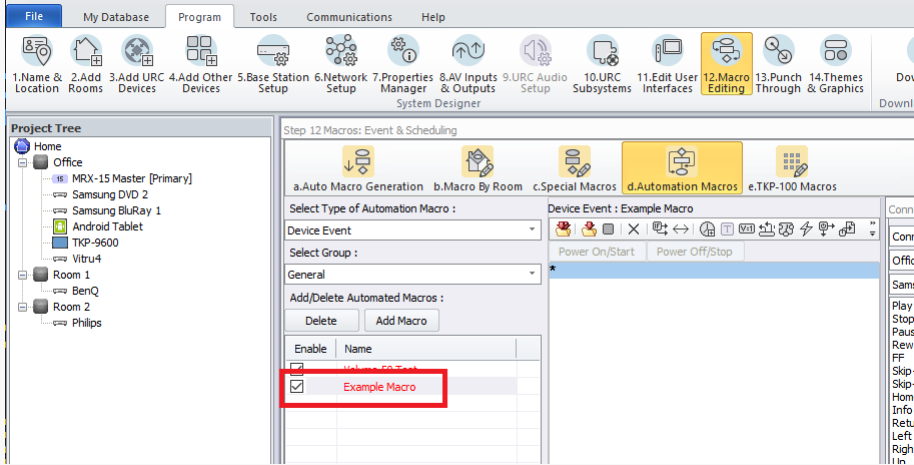
- Select **Blaze PowerZone Connect Series** from the **Available Devices** drop down menu
- Select an appropriate event for the device you wish to notify you (see above for list of events for each device type)
- Provide the Output number you wish to receive the event from



Provide IP

Click **OK** to add the event to the system.

Once the event has been added to your system you can then attach commands to its macro to automate actions.



Provide IP

## Commands

In this section you can find a list of all the available commands and the parameter values required for each:

- **SetVolume** (Recall specified preset number)
  - Outputs - The output.
  - Volume --80 to 0
- **SetDevicesPower** (Recall specified preset number)
  - On and Off
- **Zone Ducking** (Recall specified preset number)
  - Outputs - The output.
- Options OFF|DUCKER|OVERRIDE

## Downloading the Driver

Once you have configured the driver using the steps provided above you can now download the revised system configuration to your URC base station.

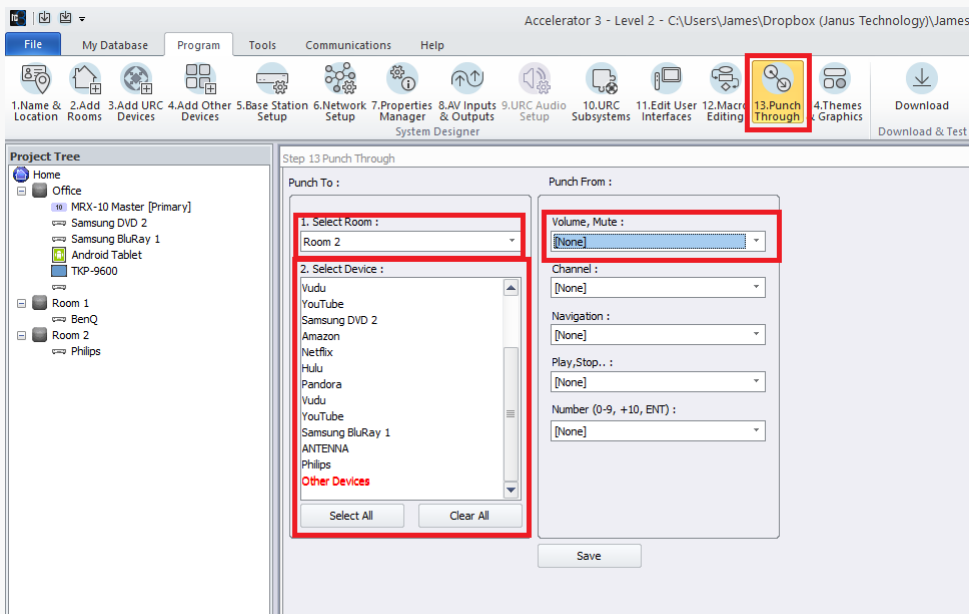
## User Interfaces

The driver package include pre-designed interfaces for changing each mix volume level

## Set Punch through

The driver has been designed to set the volume and mute for each room via Punch through.

- Choose **Program -> 13. Punch Through**
- Select the **Room**
- Select the **Driver**
- In the DropDown **Volume, Mute** Select the correct Blaze PowerZone Connect Series Output for control.



Provide IP

