

CONNECT • CONFIGURE • CONTROL

AMPLIFIERS
SOFTWARE
LOUDSPEAKERS
CONTROLLERS

BLAZE

TABLE OF CONTENT

04 Amplifiers

- 04 PowerZone™ series
- 08 PowerZone™ Connect series

16 Software

- 16 PowerZone™ Control
- 18 PowerZone™ Control Center

20 Loudspeakers

- 20 Ci series
- 24 CBL series

28 Controllers

- 28 Wall-S1

Blaze Audio specialize in pro audio solutions tailored for the installed sound market.

Our products deliver the power and exceptional sound performance demanded in commercial locations, and the technology, quality, and reliability expected by the professional audio market.

blaze-audio.com

BLAZE

PowerZone™ series



PowerZone™



252

250 W | 2 CH



504

500 W | 4 CH



1004

1000 W | 4 CH

PowerZone™ series

The PowerZone™ series consists of non-networked Class-D installation amplifiers engineered for professionals who demand affordable, reliable, high-performance audio power.

Key features include flexible configuration options that allow each output channel to be independently set to drive either Lo-Z or Hi-Z loads, enabling you to tailor your system to drive both types of loudspeakers from a single unit. Additionally, the PowerZone™ series' power-sharing technology (exclusive to the 252 and 504

models) intelligently distributes the total available power across channels, ensuring optimal performance and reliability.

With full rack support and adaptable desk and wall mount brackets, the PowerZone™ series offers unparalleled installation versatility in a compact form factor that seamlessly fits into spaces where other amplifiers may fall short. Like all PowerZone™ products from Blaze Audio, these amplifiers come with a 5-year warranty.



KEY FEATURES

- Compact 1U form factor.
- Hybrid power distribution in both Lo-Z and Hi-Z.
- Flexible power sharing across output channels (252/504 only).
- Powered by Pascal UMAC™ Class-D technology.
- Eight-position DIP switch for operational configuration, including locking front panel gain control.
- GPIO interface for remote volume and standby.
- ErP and Energy Star compliant.
- UL listed audio equipment.

TECHNICAL OVERVIEW

Use QR to access full datasheet



PowerZone™ 504

- 1. Power LED** Standby indicator.
- 2. Channel LED** Signal status indicators.
- 3. Channel Gain Adjust Controls** One per channel.
- 4. Maintenance Port** Only used by Blaze Audio.
- 5. DIP Switches** See user manual for configuration options.

- 6. GPIO Connections** External control & monitoring.
- 7. INPUT** All channels.
- 8. OUTPUT** All channels.
- 9. Mains Power** IEC 90-268 Vac input.

MODEL OVERVIEW



| Model | PowerZone™ 252 | PowerZone™ 504 | PowerZone™ 1004 |
|---|---|---|--|
| Channels | both channels Lo-Z and/or Hi-Z | all channels Lo-Z and/or Hi-Z | all channels Lo-Z and/or Hi-Z |
| Output Power @ 4/8 Ω | 2 x 125 W | 4 x 125 W | 4 x 250 W |
| Output Power @ 70/100 V | 2 x 125 W | 4 x 125 W | 4 x 250 W |
| Powershare (up to) Across all channels | 1 x 250 W | 2 x 250 W | N/A |
| Power Consumption | 75 W | 150 W | 300 W |
| Dimensions | 44.5 x 220 x 262 mm (1.75 x 8.66 x 10.31 in) | 44.5 x 220 x 337 mm (1.75 x 8.66 x 13.27 in) | 44.5 x 440 x 292 mm (1.75 x 17.32 x 11.50 in) |
| Total System Power | 250 W | 500 W | 1000 W |

BLAZE

PowerZone™ Connect 1U series

PowerZone™ Connect 1U



122/122D
125 W | 2 CH



252
250 W | 2 CH



254
250 W | 4 CH



504/504D
500 W | 4 CH



508
500 W | 8 CH



1008/1008D
1000 W | 8 CH

PowerZone™ Connect 1U series

The award-winning PowerZone™ Connect 1U series is a line of DSP-enabled Class-D amplifiers designed to simplify the lives of system installers, providing unmatched reliability, efficiency, and exceptional system configuration. Their compact form factor makes them an ideal choice for audio and voice installations with limited space constraints, demanding high output performance of up to 1000 W. Available in 2, 4, and 8-channel configurations, with select models compatible with Audinate Dante™ AoIP networks and installations, the 1U family powers both conventional low-impedance (4 Ω to 16 Ω) loudspeakers and constant voltage (70 V/100 V) transformer-coupled

loudspeakers, and features automatic power-sharing technology for proportional distribution in both Lo-Z and Hi-Z modes.

Our web app, PowerZone™ Control, is integrated into the firmware of our PowerZone™ Connect amplifiers and is designed for intuitive configuration of even the most challenging audio and voice systems. It provides seamless control over a wide range of DSP configuration and tuning features, including multi-zone setup, input mixing, end-user control, priority and ducking, restriction, input and output EQ, S/PDIF output routing, high-pass filter, speaker presets, delay, Sine generator, and much more.

KEY FEATURES

- Compact 1U form factor.
- DSP configuration via PowerZone™ Control web app (built-in).
- Hybrid power distribution in both Lo-Z and Hi-Z.
- Powered by Pascal UMAC™ Class-D technology.
- Flexible power sharing across output channels.
- Audinate Dante™ AoIP compatibility (Select models).
- S/PDIF digital input/output.
- Configurable GPIO.
- ErP and Energy Star compliant.
- UL listed audio equipment.



*PowerZone™ Connect 504D

1. **RJ45 connection** Direct Network access (Ethernet).
2. **Dante™ AoIP RJ45 port.**
3. **GPIO Connections** External control & monitoring.
4. **Wi-Fi antenna.**
5. **S/PDIF digital input/output.**
6. **4 x Unbalanced RCA input.**
7. **Balanced inputs.**
8. **4 x Lo-Z outputs or 2 x Hi-Z outputs.**
9. **Mains Power** IEC 90-268 Vac input.

MODEL OVERVIEW

Use QR to access full datasheet



| Model | PowerZone™ Connect 122/122D | PowerZone™ Connect 252 | PowerZone™ Connect 254 | PowerZone™ Connect 504/504D |
|------------------------------------|--|--|---|---|
| Channels | 2 x Lo-Z/1 x Hi-Z | 2 x Lo-Z/1 x Hi-Z | 4 x Lo-Z/2 x Hi-Z | 4 x Lo-Z/2 x Hi-Z |
| Output Power @ 4/8 Ω | 2 x 60 W | 2 x 125 W | 4 x 60 W | 4 x 125 W |
| Output Power @ 70/100 V | 1 x 125 W | 1 x 250 W | 2 x 125 W | 2 x 250 W |
| Powershare (up to) Across channels | 1 x 125 W | 1 x 250 W | 1 x 250 W | 2 x 250 W ² |
| Power Consumption | 75 W | 75 W | 75 W | 150 W |
| Dimensions | 44 x 220 x 213 mm (1.7 x 8.7 x 8.4 in) | 44 x 220 x 213 mm (1.7 x 8.7 x 8.4 in) | 44 x 220 x 319 mm (1.7 x 8.7 x 12.6 in) | 44 x 220 x 319 mm (1.7 x 8.7 x 12.6 in) |
| Total System Power | 125 W | 250 W | 250 W | 500 W |



| Model | PowerZone™ Connect 508 | PowerZone™ Connect 1008/1008D |
|------------------------------------|--|--|
| Channels | 8 x Lo-Z/4 x Hi-Z | 8 x Lo-Z/4 x Hi-Z |
| Output Power @ 4/8 Ω | 8 x 60 W | 8 x 125 W |
| Output Power @ 70/100 V | 4 x 125 W | 4 x 250 W |
| Powershare (up to) Across channels | 2 x 250 W ³ | 4 x 250 W ⁴ |
| Power Consumption | 150 W | 300 W |
| Dimensions | 44 x 440 x 319 mm (1.7 x 17.3 x 12.6 in) | 44 x 440 x 319 mm (1.7 x 17.3 x 12.6 in) |
| Total System Power | 500 W | 1000 W |

100 V line mode is @ -1 dB (= 90 V)
²PowerZone™ Connect 504: 250 W across ch 1/2 and 250 W across ch 3/4
³PowerZone™ Connect 508: 250 W across ch 1/2/3/4 and 250 W across ch 5/6/7/8
⁴PowerZone™ Connect 1008: 250 W across ch 1/2, 250 W across ch 3/4, 250 W across ch 5/6, 250 W across ch 7/8

BLAZE

PowerZone™ Connect 2U series



PowerZone™ Connect 2U



1002

1000 W | 2 CH



1502

1500 W | 2 CH



2004/2004D

2000 W | 4 CH



3004/3004D

3000 W | 4 CH



4008

4000 W | 8 CH



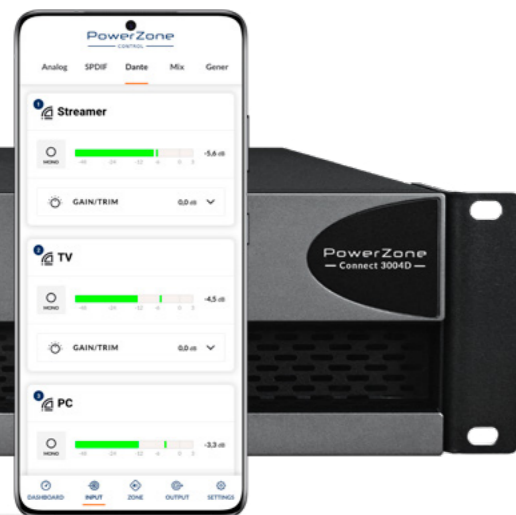
6008/6008D

6000 W | 8 CH

PowerZone™ Connect 2U series

The award-winning PowerZone™ Connect 2U series is a line of ultra-reliable, DSP-enabled Class-D amplifiers delivering exceptional system configuration and flexible output, with a total system power ranging from 1000 W to 6000 W. Available in 2, 4, and 8-channel configurations, with select models compatible with Audinate Dante™ AoIP networks and installations, the PowerZone™ Connect 2U series powers both conventional low-impedance (2 Ω to 16 Ω) loudspeakers and constant voltage (70 V/100 V) transformer-coupled loudspeakers, and features proportional distribution in both Lo-Z

and Hi-Z modes. Our web app, PowerZone™ Control, is integrated into the firmware of our PowerZone™ Connect amplifiers and is designed for intuitive configuration of even the most challenging audio and voice systems. It provides seamless control over a wide range of DSP configuration and tuning features, including multi-zone setup, input mixing, end-user control, priority and ducking, restriction, input and output EQ, S/PDIF output routing, high-pass filter, speaker presets, delay, Sine generator, and much more.



TECHNICAL OVERVIEW



1. **RJ45 connection** Direct Network access (Ethernet).
2. **Dante™ AoIP RJ45 port.**
3. **GPIO Connections** External control & monitoring.
4. **Wi-Fi antenna.**
5. **S/PDIF digital input/output.**
6. **4 x Unbalanced RCA input.**
7. **4 x Balanced inputs.**
8. **4 x Lo-Z outputs or 2 x Hi-Z outputs.**
9. **Mains Power** IEC 90-268 Vac input.

KEY FEATURES

- Full rack 2U form factor.
- DSP configuration via PowerZone™ Control web app (built-in).
- Hybrid power distribution in both Lo-Z and Hi-Z.
- Powered by Pascal UMAC™ Class-D technology.
- Audinate Dante™ AoIP compatibility (Select models).
- S/PDIF digital input/output.
- Configurable GPIO.
- ErP and Energy Star compliant.
- UL listed audio equipment.

MODEL OVERVIEW

Use QR to access full datasheet



| Model | PowerZone™ Connect 1002 | PowerZone™ Connect 1502 | PowerZone™ Connect 2004/2004D | PowerZone™ Connect 3004/3004D |
|---------------------------|------------------------------------|------------------------------------|------------------------------------|------------------------------------|
| Channels | 2 x Lo-Z/1 x Hi-Z | 2 x Lo-Z/1 x Hi-Z | 4 x Lo-Z/2 x Hi-Z | 4 x Lo-Z/2 x Hi-Z |
| Output Power @ 2 Ω | 2 x 500 W (SE) | 2 x 750 W (SE) | 4 x 500 W (SE) | 4 x 750 W (SE) |
| Output Power @ 4 Ω | 2 x 500 W (SE) 1 x 1000 W (BTL) | 2 x 750 W (SE) 1 x 1500 W (BTL) | 4 x 500 W (SE) 2 x 1000 W (BTL) | 4 x 750 W (SE) 2 x 1500 W (BTL) |
| Output Power @ 8 Ω | 2 x 250 W (SE) 1 x 1000 W (BTL) | 2 x 400 W (SE) 1 x 1500 W (BTL) | 4 x 250 W (SE) 2 x 1000 W (BTL) | 4 x 400 W (SE) 2 x 1500 W (BTL) |
| Output Power @ 70 V | 1 x 1000 W (BTL) | 1 x 1200 W (BTL) | 2 x 1000 W (BTL) | 2 x 1200 W (BTL) |
| Output Power @ 100 V | 1 x 1000 W (BTL) | 1 x 1500 W (BTL) | 2 x 1000 W (BTL) | 2 x 1500 W (BTL) |
| Total System Power | 1000 W | 1500 W | 2000 W | 3000 W |



| Model | PowerZone™ Connect 4008 | PowerZone™ Connect 6008/6008D |
|---------------------------|------------------------------------|------------------------------------|
| Channels | 8 x Lo-Z/4 x Hi-Z | 8 x Lo-Z/4 x Hi-Z |
| Output Power @ 2 Ω | 8 x 500 W (SE) | 8 x 750 W (SE) |
| Output Power @ 4 Ω | 8 x 500 W (SE) 4 x 1000 W (BTL) | 8 x 750 W (SE) 4 x 1500 W (BTL) |
| Output Power @ 8 Ω | 8 x 250 W (SE) 4 x 1000 W (BTL) | 8 x 400 W (SE) 4 x 1500 W (BTL) |
| Output Power @ 70 V | 4 x 1000 W (BTL) | 4 x 1200 W (BTL) |
| Output Power @ 100 V | 4 x 1000 W (BTL) | 4 x 1500 W (BTL) |
| Total System Power | 4000 W | 6000 W |

BLAZE

PowerZone™ Control

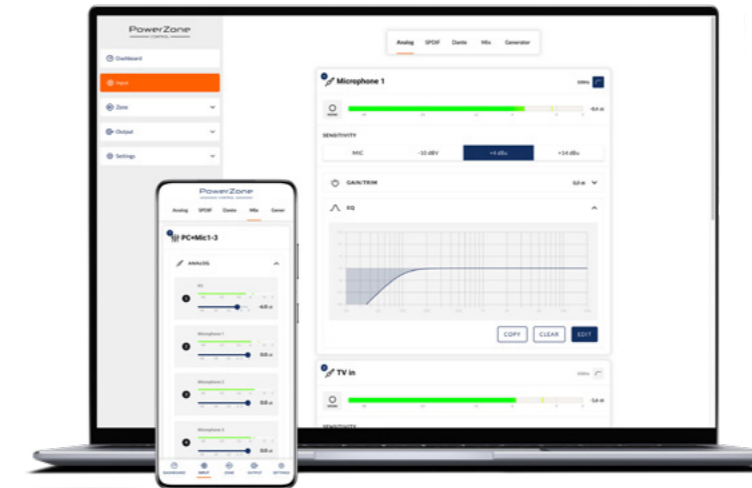
PowerZone™ Control DSP web app

Our web app, PowerZone™ Control, is integrated into the firmware of our PowerZone™ Connect amplifiers, and stands as the most versatile DSP controller available for configuration of audio/voice systems in locations requiring multi-zone audio set up with multiple mic talk overs.

PowerZone™ Control offers a seamless control over a wide range of DSP configuration and tuning features, including multi-zone setup, input mixing, end-user control, priority and ducking,

restrictions, EQ for inputs and outputs, S/PDIF output routing, high-pass filters, speaker presets, compressors, limiters, delay, controller configuration, sine generator, and much more. Make sure to update to the latest firmware to unlock all features.

Access PowerZone™ Control via our desktop app, PowerZone™ Control Center, or through any browser on other devices using the built-in wireless access point of your PowerZone™ Connect amplifier.



KEY FEATURES

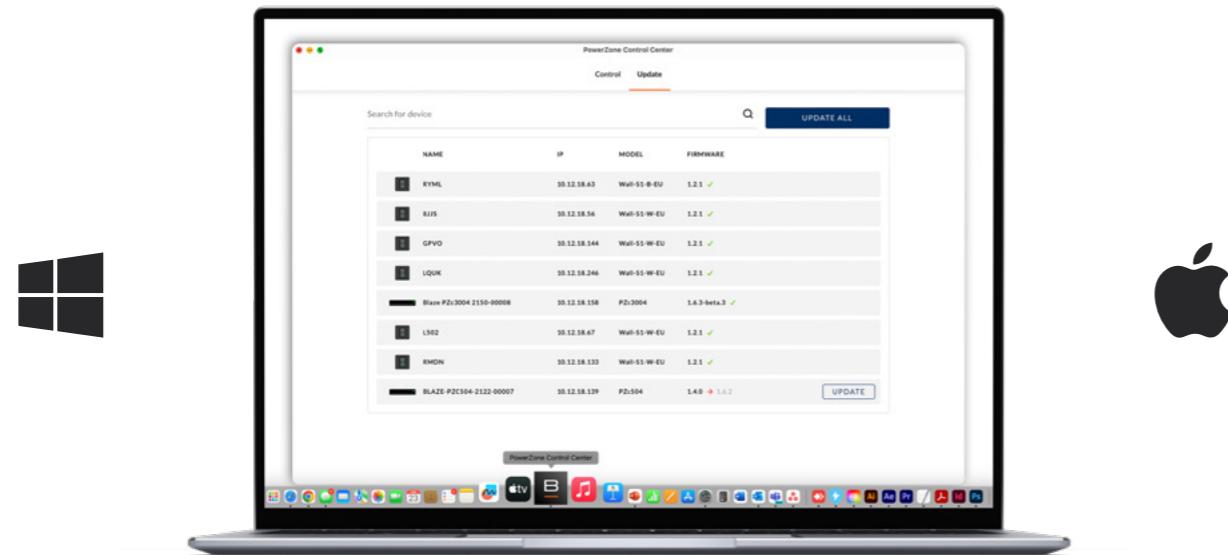
- Multi-zone setup: Configure a complex multi-zone system with advanced settings and zone management.
- Input mixing: Combine input sources into a total of 8 separate mixers.
- Priority and ducking: Configure priority input and ducking to override primary audio in zones.
- Input and output EQ: Virtual parametric EQ on each analog input and all outputs.
- S/PDIF output routing; Route zones and inputs to S/PDIF and expand the install with another amplifier.
- High-pass filter for better mic speech clarity & natural sound.
- Speaker presets: Load speaker presets for Blaze Audio, Bose, Yamaha, JBL, Sonance, and other major brands—or customize your own.
- Delay: Up to 100.00 ms of delay to any output (112.50 ft/34.3 m)
- In room controller configuration: Configure Blaze Audio Wall-S1 controllers and 3rd party controller brands like Crestron, Control4, and Q-Sys.
- End-user control: Enable password-protected access for end-users to a simplified interface with key controls.

PowerZone™ Control Center

DSP desktop app

KEY FEATURES

- View all devices on your network.
- Configure DSP settings on each device.
- Update firmware for all or selected devices.
- Copy DSP settings between devices.



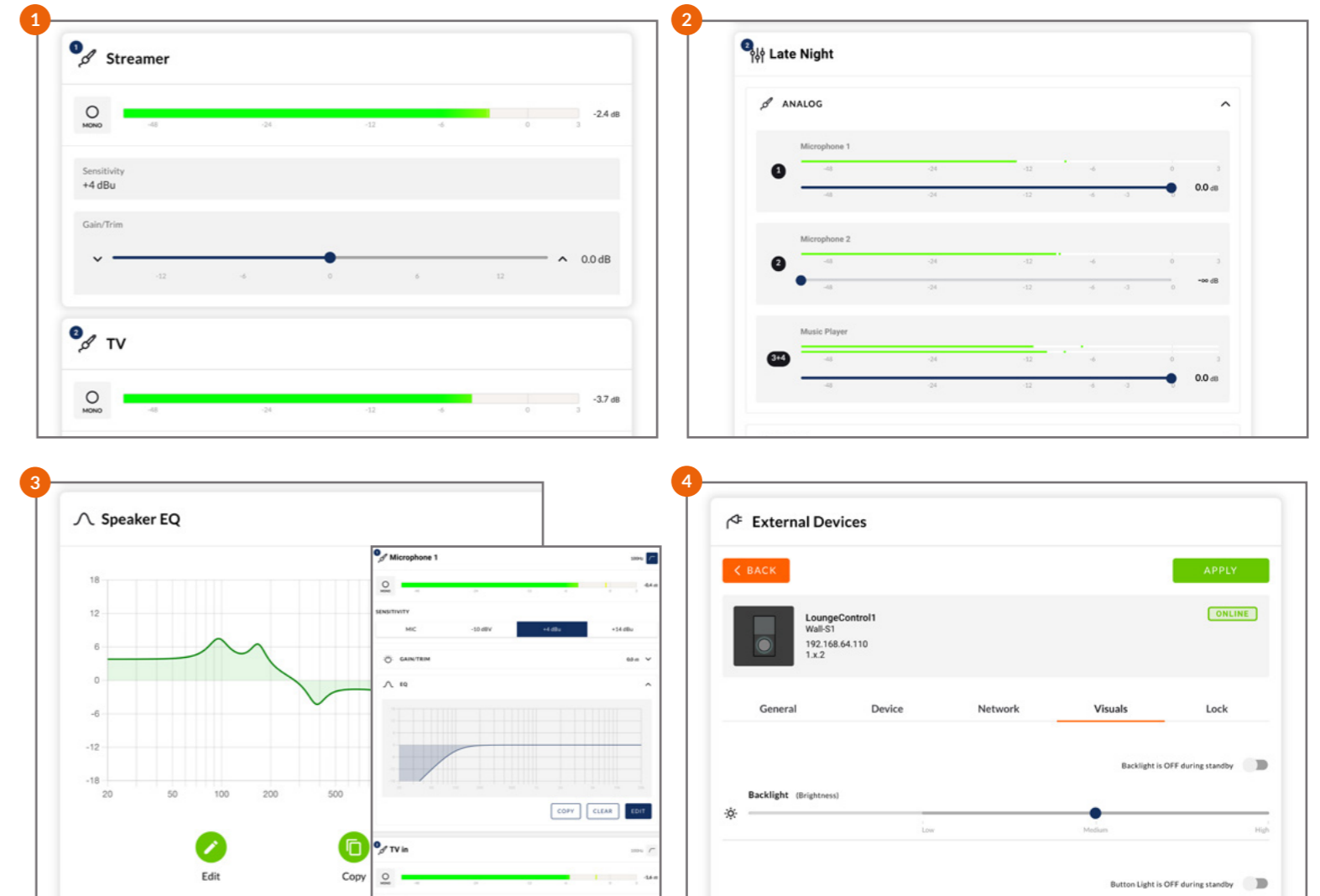
Unlock simplicity and efficiency with our free desktop app, PowerZone™ Control Center, designed to centralize the management and DSP control of larger systems with multiple devices directly from your laptop. Connect your computer to your systems network and centralise configuration, updates and backups of all connected devices from a single computer. PowerZone™ Control Center automatically stores the latest

firmware for our amplifiers and PoE controllers, ensuring lightning-fast updates with just a single click on your laptop – whether you are managing 1 or 500 devices.

PowerZone™ Control Center is available for macOS and Windows.

TECHNICAL OVERVIEW

Scan QR to access the web app



1. Multi-Zone setup.
2. Input mixing.

3. Input & output EQ.
4. External Devices Wall-S1 controllers.

BLAZE



Ci series

Ci series

The IP-rated Ci series by Blaze Audio, available in black and white variants, is a unique line of high-performance loudspeakers designed in Denmark for indoor and outdoor commercial applications that blend into any space while providing exceptional



sound quality for speech and background music. The modular 90° cabinet-equipped with built-in mounting sliders and hidden cabling-ensures a smooth, integrated look in vertical or horizontal corners and surfaces, as well as the coupling of up to three



cabinets to meet the characteristics of free-standing corners and other unique setups.

The Ci series delivers outstanding value for projects requiring clear speech and premium background music playback, making it the perfect choice for enhancing acoustic environments, adding depth to the customer experience, and optimizing performance,

all while seamlessly blending into a wide range of indoor and outdoor commercial settings.

For enhanced low-end performance, the Ci series' 2", 4", and 5" models -with optional high-impedance versions— can be paired indoors with the C8S and C12S subwoofers.

Full-range

KEY FEATURES

- Triangular ABS cabinet design for corners.
- Outdoor IP65 rating (IP64 for Ci2).
- Switchable 100/70V mode/8 Ω mode (Select models).
- Switchable limiting circuit for tweeter.
- 100° vertical and horizontal dispersion.
- Couples together for 180° or 270° coverage.
- Bracket-free or hidden slider mounting for easy one-person installation.
- Perforated steel grille.
- Hidden cable terminals.
- Compatible with Blaze Audio's C8S and C12S subwoofers.



| Model | Ci2 | Ci4 / Ci4-V | Ci5 / Ci5-V |
|---------------------------|---|---|--|
| Sensitivity SPL / 1W @ 1m | 84 dB | 86 dB | 88 dB |
| Maximum SPL, Long Term | 99 dB | 105 dB | 107 dB |
| Maximum SPL, Peak | 105 dB | 111 dB | 113 dB |
| Frequency response | 140-20.000 Hz | 60-20.000 Hz | 55-20.000 Hz |
| Nominal impedance | 8 Ω | 8 Ω | 8 Ω |
| Dispersion | 100° vertical / 100° horizontal | 100° vertical / 100° horizontal | 100° vertical / 100° horizontal |
| Ingress Protection | IP64 | IP65 | IP65 |
| Recommended amplifier | 15-30 W | Ci4: 30-60 W Ci4-V: 25-50 W | Ci5: 50-100 W Ci5-V: 45-90 W |
| Transformer taps | - | 70V: 3,75, 7,5, 15 W 100V: 7,5, 15 W | 70V: 3,75, 7,5, 15, 30 W 100V: 7,5, 15, 30 W |
| Measurements | 181 x 135 x 102 mm (7.13 x 5.32 x 4.02 in) | 400 x 190 x 145 mm (15.75 x 7.48 x 5.71 in) | 450 x 209 x 150 mm (17.72 x 8.23 x 5.91 in) |
| Weight | Ci5: 0,75 kg (1.65 lb) | Ci4: 2,7 kg (5.95 lb) Ci4-V: 3,15 kg (6.94 lb) | Ci5: 2,85 kg (6.28 lb) Ci5-V: 3,45 kg (7.61 lb) |
| Colour | White (RAL9010) Black (RAL9005) | White (RAL9010) Black (RAL9005) | White (RAL9010) Black (RAL9005) |

Subwoofers

KEY FEATURES

C8S:

- 8" woofer with dual voice coil.
- 8" passive radiator.
- Built in crossover.
- Plasti-dipped MDF cabinet.
- Heavy duty screw terminals.
- Placement: Indoor, on wall, floor, or below sofa.
- Accessories: Wall bracket (included).
- Designed in Denmark.
- Available in black or white.

C12S:

- 12" shallow long throw subwoofer.
- Bass reflex design.
- Painted 18 mm MDF cabinet.
- Heavy duty screw terminals.
- Placement: Indoor, on wall or on floor.
- Accessories: Wall bracket (included).
- Designed in Denmark.
- Available in black or white.



| Model | C8S | C12S |
|------------------------------|---|---|
| Sensitivity SPL / 1W @ 1m | 88 dB | 95 dB |
| Maximum SPL, Long Term | 108 dB | 120 dB |
| Maximum SPL, Peak | 114 dB | 126 dB |
| Frequency response | 30-240 Hz | 45-600 Hz |
| Nominal impedance | 8 Ω | 8 Ω |
| Ingress Protection | Indoor use only | Indoor use only |
| Recommended amplifier | 50-150 W into 8 Ω | 300-600 W into 8 Ω |
| Measurements with wall mount | 530 x 374 x 190 mm (20.87 x 14.72 x 7.48 in) | 649 x 445 x 220 mm (25.55 x 17.58 x 8.66 in) |
| Weight | 10.70 kg (23.59 lb) | 22.25 kg (49.05 lb) |
| Colour | Matt white (RAL9010) Matt black (RAL9005) | Matt white (RAL9010) Matt black (RAL9005) |

Use QR codes to access full datasheets



BLAZE



CBL series

CBL series

The powerful Constant Beamwidth Loudspeakers series, designed by Hugh Sarvis, redefines value in professional audio by delivering crystal-clear, natural musicality and speech reproduction in a highly controlled, symmetrical dispersion

pattern, effectively reducing destructive interference across the entire listening area. Additionally, the companion BL18S subwoofer provides low-frequency response down to 36 Hz, with maximum sound pressure levels reaching 136 dB.



KEY FEATURES

- Highly focused pattern with consistent frequency response throughout the frequency range, on and off-axis.
- Symmetrical dispersion pattern.
- Custom 5" low-frequency drivers with tightly designed acoustic centers.
- 2" gain-shaded, vertically arrayed HF drivers with 1" voice coils.
- Super-wide symmetrical horizontal dispersion with pattern control down to 200 Hz.
- Ultra low-distortion drivers.
- Seamless integration with Blaze Audio amplifiers featuring custom speaker presets.
- Black or white options.

Full-range



| Model | CBL523 | CBL528 |
|---------------------------------------|---|--|
| Frequency Response (-3 dB) | 71 Hz - 18 kHz ¹ | 54 Hz - 18 kHz ² |
| Frequency Range (-10 dB) | 55 Hz - 18 kHz | 48 Hz - 18 kHz ² |
| High-Pass Filter | 48 Hz (Recommended) | 48 Hz - w/ minimum 24 dB / Butterworth Filter |
| Horizontal Nominal Dispersion (-6 dB) | 160° | 180° |
| Vertical Nominal Dispersion (-6 dB) | 55° (Average beamwidth, 500 Hz - 5 kHz) | 45° |
| Recommended Crossover Frequency | 520 Hz | 420 Hz (acoustic, active, external DSP) |
| Long Term Power Handling | Full range: 160 W | Low Freq: 320 W (1280 W peak) ³ High Freq: 200 W (800 W peak) ³ |
| Impedance | 4 Ω | Low Freq: 8 Ω High Freq: 5.2 Ω |
| Net Weight | 6.8 kg/15 lbs | 17.46 kg/38.5 lbs |
| Dimensions (HxWxD) | 205.3 x 350 x 226.2 mm (8.08 x 13.78 x 8.90 in) | 494.3 x 494 x 406.16mm (19.46 x 19.45 x 15.99 in) |
| Color | Black or White | Black or White |
| Max SPL @ 1W/1m (2.83v) | 119 dB | 121 dB SPL (131 dB SPL peak) |

¹Frequency response and range measured on-axis in an anechoic environment.

²Frequency response and range measured on-axis with recommended active EQ in an anechoic environment.

³Power handling tested using pink noise filtered to meet IEC 268-5, 6 dB crest factor, 100 hours, with recommended EQ.

Subwoofers



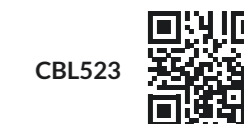
| Model | BL18S |
|--|---|
| Frequency Response (-3 dB) ¹ | 36 Hz - 150 Hz |
| Frequency Range (-10 dB) ¹ | 31 Hz - 150 Hz |
| Low-Pass Filter | 90 Hz (Recommended) |
| Nominal Directivity (-6 dB) | Omnidirectional or cardioid |
| Long Term Power Handling Capacity ² | 2400 W (4800 W peak) |
| Maximum SPL @ 1m ³ | 136 dB |
| Transducer Components | 1 x 18 inch, 4" voice-coil |
| Dimensions (HxWxD) | 571.5 x 622.3 x 762 mm (22.5 x 24.5 x 30 in) |
| Net Weight | 59.65 kg (131.5 lb) |
| Shipping Weight | 66.7 kg (147 lb) |
| Color | Black |
| Connectors/Bi-Amp | Two (2) parallel-wired NL4 Neutrik® Speakon® connectors. |

¹Frequency response and range measured on-axis with anechoic environment.

²Power handling tested using pink noise filtered to meet IEC 268-5, 6 dB crest factor, 100 hours, with recommended EQ.

³Peak level measured at 1m under free field conditions using 10 dB crest factor pink noise with specified Blaze Audio preset and corresponding EQ settings.

Use QR codes
to access full datasheets



CBL523



CBL528



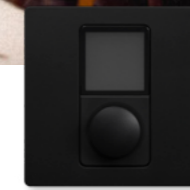
BL18S



Wall-S1



W-EU
WHITE



B-EU
BLACK



W-US
WHITE



B-US
BLACK



Wall-S1 controller

The Wall-S1 is a wall mounted networked/ PoE controller for remote control of any Blaze Audio PowerZone™ Connect amplifier. It enables end-user control of input source and volume, as well as many advanced features and settings that system installers can configure and customise to meet the needs of a specific location. It is simple to set up, configure, and customize any installed system, and any sound zone.

With the ability to pair up to 8 x Wall-S1 controllers per PowerZone™ Connect amplifier and assign them to any configured audio zones, installers can effortlessly set up projects using this straightforward networked controller. Real-time syncing within the same zone, PIN code protection for system security & access, and customizable color screens are among the advanced features that can be personalized to ensure the perfect fit for each location.

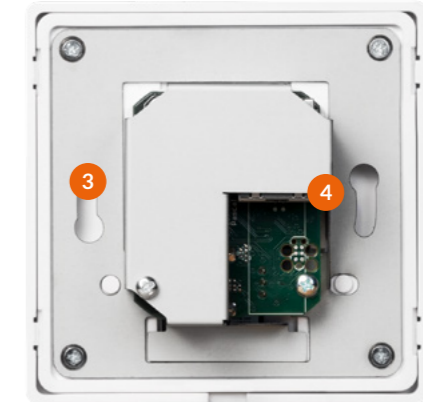
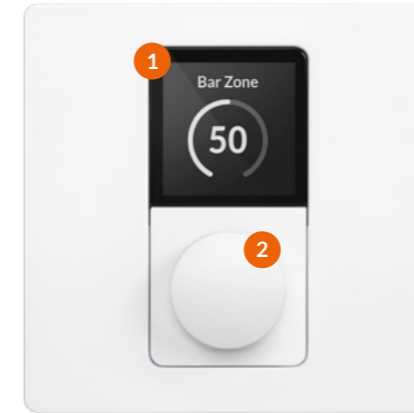


KEY FEATURES

- Danish-designed, high-performance polymer material with a touch-friendly matte finish and concealed screws.
- Available in EU and US versions, standard white RAL9003 and black RAL9005.
- 4 color screen schemes, 4 brightness and 4 button backlight options.
- Instant network pairing and configuration for up to 8 Wall-S1 controllers with each PowerZone™ Connect amplifier.
- Optional 4-digit PIN code protection.
- Works with PowerZone™ Connect amplifiers.

TECHNICAL OVERVIEW

Use QR to access full datasheet



1. **LCD Screen** 240 x 240 px in full RGB.
2. **Control Button** Push, Hold, Rotate.

3. **Mounting holes** Fits standard electrical boxes.
4. **PoE Connection** Connection and power in-one.

MODEL OVERVIEW



| Model | W-EU | B-EU | W-US | B-US |
|-------------------------------|--|-----------------|----------------------------------|-----------------|
| Amplifier Compatibility | Blaze Audio - PowerZone™ Connect series | | | |
| Colour | White (RAL9003) | Black (RAL9005) | White (RAL9003) | Black (RAL9005) |
| External Dimensions (H x W) | 86.79 x 86.79 mm (3.42 x 3.42 in) | | 115.1 x 70.6 mm (4.53 x 2.78 in) | |
| Weight | 120 g (4.2 oz.) | | 120 g (4.2 oz.) | |
| Maximum Cable Length (CAT 5e) | 100 m (328 ft) | | | |
| Power Consumption | PoE Class 1 / 3.84 W max | | | |
| Power Supply | Power to the RJ45 ethernet port on the rear of device using a category 5e cable (or faster STP) with the use of a standard PoE switch, or PoE injector | | | |

CASE STUDY

EUROMAST ROTTERDAM POWERED BY BLAZE AUDIO AMPLIFIERS

Experience Rotterdam at 185 meters with an immersive lift ride featuring a light show and audio system powered by Blaze Audio.

Rotterdam's Euromast lift cabin features a cutting-edge 360-degree spatial audio system, delivering immersive sound through 20 meticulously placed speakers that create a dynamic 3D surround sound experience. Each speaker is individually controlled, providing a unique audio experience that surrounds the audience, placing them at the heart of the action.

The entire production is synchronized using timecode, ensuring that lighting, soundtrack, voice-over, and lift movement operate in perfect harmony.



To achieve optimal sound quality and immersive audio, a compact amplifier solution was essential. The system utilizes **5 x PowerZone™ Connect 254** amplifiers to drive the 2-way speakers, delivering crisp sound directly to the audience, while **1 x PowerZone™ Connect 504** amplifier powers the 2 x subwoofers, enhancing the overall sonic impact of the visual show within the lift.

Installation by: Ata Tech

CASE STUDY

PYRMONT POINT HOTEL SYDNEY POWERED BY BLAZE AUDIO AMPLIFIERS

Faced with the challenge of updating its sound system while preserving its distinctive character, Pyrmont Point Hotel, a heritage gem in Sydney's Pyrmont district, sought the expertise of Jands Pty Ltd, our Australian partner and leader in audio, video, and lighting solutions. The collaboration led to the selection of Blaze Audio's PowerZone Connect series for amplification across the hotel's various venues, encompassing 9 zones, including a larger event space hosting DJs and live bands, cocktail lounges, a balcony, and a bistro.

Nathan David, the owner of Pyrmont Point Hotel, expressed his delight with the upgrade: "The transformation of our sound system has been astounding. The integration of Blaze Audio amplifiers has been central to this improvement, offering our



guests a more sophisticated and immersive audio experience". Ilias Sintrikos, Business Development Manager – Hospitality at Jands, remarks, "Blaze Audio was the perfect fit for Pyrmont Point Hotel. Its amplifiers brought the clarity and richness needed to elevate the venue's audio experience".

Products installed:
2 x Powerzone Connect 3004
2 x Powerzone Connect 2004
1 x Powerzone Connect 254
1 x Powerzone Connect 252

Scan the QR code to watch the case study film provided by Jands.



Installation by: Jands Pty Ltd



Retail Environments

Music plays a crucial role in the success of retail businesses as it affects customer mood, behavior, and purchase decisions. At Blaze Audio, we provide a variety of system designs featuring amplifier models ranging from 60 W to 750 W per channel, which are easy to configure. Our PowerZone™ Control web app allows you to restrict or set maximum and minimum volume levels across different retail zones. Additionally, our networked wall controllers help manage the source and volume, providing customization and PIN code protection for added security.



Bars and Cafes

Our selection of amplifiers is designed to meet the sound pressure needs of any hospitality project, regardless of its size. With channel output available in both Lo-Z and Hi-Z, as well as smart power sharing and easy system setup, PowerZone™ amplifiers are an ideal choice for bars and cafes. By utilizing our PowerZone™ Control web app and networked controllers, any project can be swiftly configured to provide exceptional background sound in locations with multiple zones.



Restaurant and dining

Regardless of the size of the restaurant, music is an essential element of the overall dining experience. As different areas within a restaurant have varying audio requirements, a flexible audio system is necessary. For instance, busy bar areas may require higher sound pressure levels, while cosy dining areas may require much less. Our PowerZone™ amplifiers provide the ideal solution, delivering the required power output and flexibility to provide sound to any zone or room, regardless of its size.



Hotels and Education sites

Our PowerZone™ Connect amplifier series and web app, PowerZone™ Control, provide effortless customization for full DSP configuration of audio/voice systems in locations requiring multi-zone setups with sound and multiple mic talk overs. This is particularly crucial in hotels, educational facilities, auditoriums, theaters, and vast hospitality spaces with multiple meeting rooms. Furthermore, our S/PDIF output routing feature facilitates zone and input routing allowing easy system expansion through multiple interconnected amplifiers.



Fitness & Sports venues

Fitness projects demand high-quality sound systems with exceptional flexibility. Background music is played in gym and workout areas, while the same system is also required to provide full power with mic talk overs in classes such as spinning.

PowerZone™ amplifiers can handle these demanding environments, as automatic power sharing delivers the necessary power across any channel and loudspeaker setup while easy pre-set inputs for audio/voice mixes for different fitness activities can be configured using our PowerZone™ Control web app.



House of Worship

House of Worship projects require reliable, high-quality amplification of voice, often covering a large distribution area. Blaze Audio solutions are perfect for HoW projects, thanks to our high-quality amplification at low power and superior speech intelligibility. Our PowerZone™ Connect amplifiers offer a wide range of total system power, between 125 W and 3000 W, and can be set up with any speaker load. Moreover, our PowerZone™ Control web app simplifies audio setup, enabling multiple mic talk-overs, and making it a hassle-free process.



Corporate, Government & Enterprise

The Corporate, Government, and Enterprise sector has a wide range of applications for audio systems, with or without multiple mic talk overs, including conferences and boardrooms, meeting areas of any size, warehouses, cafeterias, and break areas.

Blaze Audio is an ideal choice for these applications, as our solutions are reliable, flexible, and easy to set up and use. Our PowerZone™ amplifiers are capable of covering different sound pressure needs, and up to 8 Wall-S1 controllers can be networked to cover many rooms or large spaces.



The transformation of our sound system has been astounding. The integration of Blaze Audio amplifiers has been central to this improvement, offering our guests a more sophisticated and immersive audio experience.”

Nathan David,
Owner of Pyrmont Point Hotel,
Sydney, Australia

CONNECT • CONFIGURE • CONTROL

blaze-audio.com